

Yes, **U** Can!

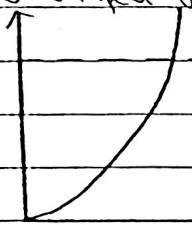
000001

section A

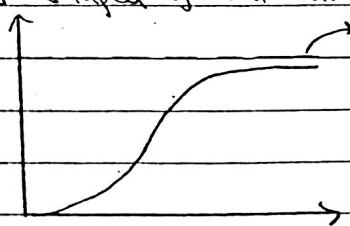
1. C ✓
2. C ✓
3. B ✓
4. D ✓
5. A ✓
6. B ✓

7. IPCC ✓
8. Hardin ✓
9. collapse (crash) ✓
10. economic, social, environment ✓
11. green mark (BCA) ✓
12. 1 kg ✓
13. LCA framework ✓
14. green washing ✓

15. ~~J-shaped growth: unsustainable use of resources, system crashes~~
→ carrying capacity



S-shaped growth: sustainable use of resources, early growth is exponential.
→ carrying capacity



16. ~~- Less vegetation~~
 - Sources produce heat and pollutants
 - Complex 3D structures
 - Impervious and sealed surfaces

17. ~~Embedded water is the amount of water used in the production of goods or services. Meat have a higher embedded water content than vegetables.~~

18/ The public roads in Singapore is a common shared by Singaporeans. Each of the Singaporean has his own interest in mind, which is to get to work or school as quickly and easily possible. Hence, when everyone drives on the public roads, the roads jam up and in turn slow down traffic management. Furthermore, the air in Singapore is filled with pollutants.

19/ T

20/ F

21/ F upper limit.

Section B

- (A) Good landuse planning can meet future needs and overcome the problems of resources limitations.
(B) Safeguarding of transport corridors will reserve a free space for future use. Hence, there's no need to bulldoze any existing buildings in order to construct new transport infrastructure in the future.
(C) The conserved heritage buildings are considered as green buildings as people reuse structures that are existing.
(D) Pocket parks and park connectors keep the environment green and clean, also help to reduce pollution.
(E) Land reclamation can meet the needs of rising population by utilizing and restoring disturbed land and resources such as soil, vegetation, water.

2. ~~famine, war (or disease)~~

(B) residential ~~buildings, airport~~ industrial

(C) supply, demand management measure

(D) rising population, depleting resources X

(E) time, distance ✓

- (3) - parking guidance system (PGS) guides drivers to nearest parking facility hence reducing unnecessary travel time and distances.
- Increasing new rail lines (downtown line) encourages people to take public transports hence reducing pollution from vehicles on the road.

Yes, U Can!

This encourages clean mode of transport in Singapore and hence less pollution.

for cyclists, the island wide cycling path network will be well over 700km

4. A satellite town is a self contained town, in vicinity of the city, to house those who will otherwise create a demand for expanding existing city, but depends on city for employment opportunities and major activities.

The advantages are as follows:

- residents tend to travel less to city for activities / shopping
- light industrial developments built within satellite towns provide job opportunities for the residents
- schools available in town for children / youths

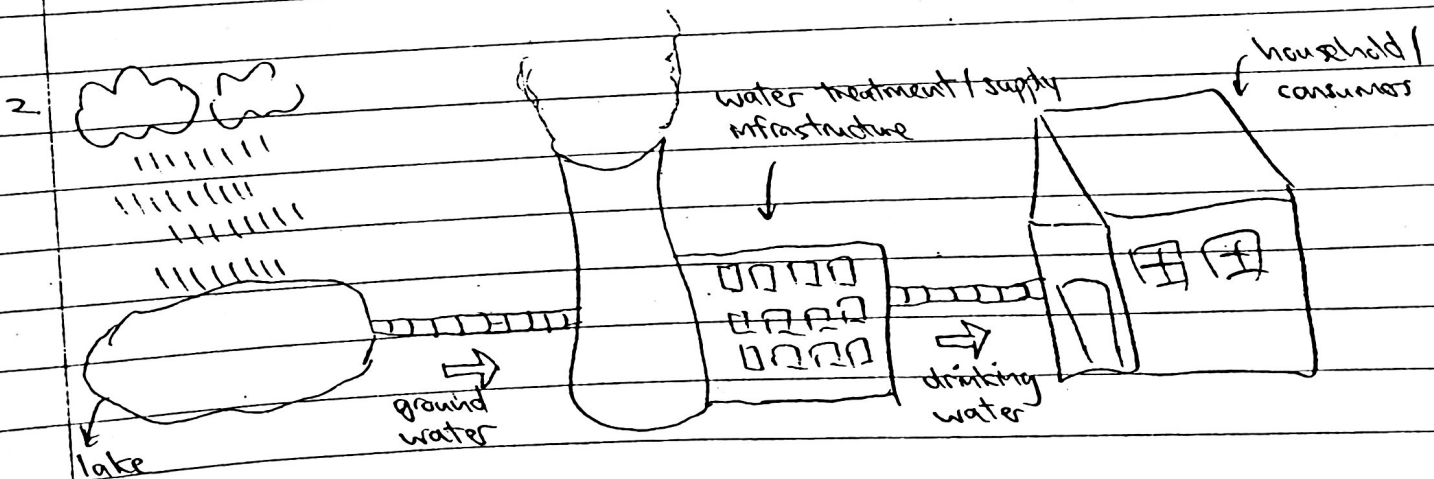
Section C

1. point source - pollutants are discharged at specific locations.

- factory, sewage treatment plant, spills,

non-point source - pollutants are discharged over wide area (runoff from land)

- construction sites, logged forests



- 3.
- ecosystem is damaged
 - water bodies are polluted
 - damage on agriculture
 - affects urban planning
 - additional cost for redevelopment

choose any 4.

Yes, U

Section D

- 1 D
- 2 D ✓
- 3 B ✓
- 4 B ✓
- 5 C ✓

Section E

- place public safety and interest ahead of other considerations
- provide expert advice to others
- ensure resources and money are well used of
- whistle blow any wrong doings
- do not work for private projects / private company